

fashion

A / W

16 17

Craftsmanship
Cozy ruggedness
Sci-fi street wear
'No-era' style



Craftmanship

Key style - Intersection between rock and soft . The Craftmanship is viewed through the lens of today by new generation of market reviving old techniques, based in emerging centres such as America's deep South and Bangkok.



Overview

- Craftmanship celebrates everything that is humble and deeply rooted in the practical and everyday
- A simple, honest approach to design celebrates the principles of simplicity and authenticity
- Inspired by well-loved wardrobe staples, textiles focus on traditional weaves as well as skilfully patched and repaired surfaces using heirloom textile remnants



18-4220 TCX

18-5606 TCX

19-4227 TCX

19-4125 TCX

19-4342 TCX

18-4105 TCX

17-1109 TCX

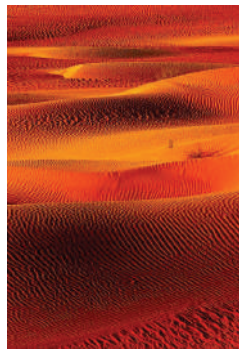
19-1532 TCX

18-1535 TCX

19-3905 TCX

12-0605 TCX

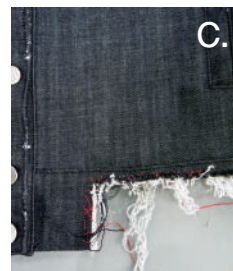




Detail

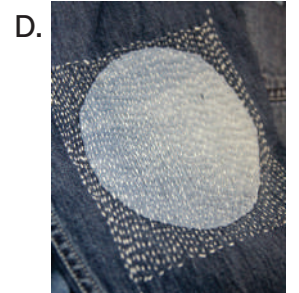


(A). HEIRLOOM QUILTS / JAPANESE BORO - Heirloom quilts and Japanese boro are inventively pieced and patched together. Odd alignments of patched patterns create distorted perspective on the patch and repair trend.

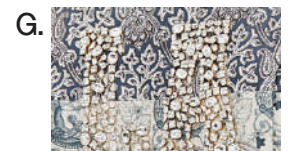


(B). LAYERED DESTRUCTION - New coated yarns and bonded fabrics can be scraped to reveal contrasting layers. Antique surfaces are created through delicate tears and fraying as well as meticulous boro repairs.

(C). UNRAVELLED - Taking on a deteriorated appearance with hand- or laser destroyed applications reaching from two to three inches (5.1 to 7.6cm).



(D). KANTHA STITCH - Simple running stitches are used as decorative highlights on denim assortments. Thick white threads are used over indigo grounds with naive and irregular stitch patterns.



(G). ECLECTIC SALVAGE - Mixed-media surfaces and embellishment are contrasted with destroyed and distressed finishes to create these modern magpie looks. Combinations of studs and hardware in all-over encrusted surfaces create this couture-punk attitude. premium edge.



(H). PROGRESSIVE PAINTS - Taking the decorator look to new heights with embroidered splashes and thick layers of painted-on silicone. Vibrant shades are deliberately clashed on white or indigo grounds in drips, splatters and smeared patterns.



(E). BASKETRY REMAKE - Simple basket constructs are used in an honest crafted sense. Pre-used textiles are reappropriated to create statement in details



(F). STARCHED - Rich and clean indigo with a raw natural sheen creates volume and structure for a dynamic new direction in contemporary denim. It elevates classic items such as the trucker and five-pocket jean with premium edge.

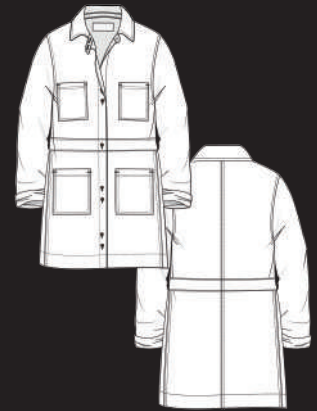
Key Pattern



Retro Shearling



Kimono Housecoat



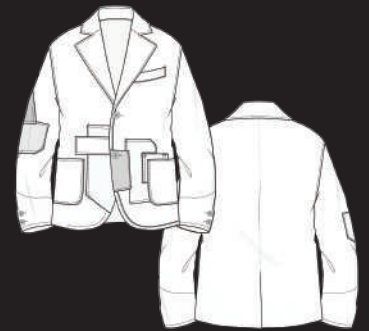
Railroad Dress



Remixed Rodeo

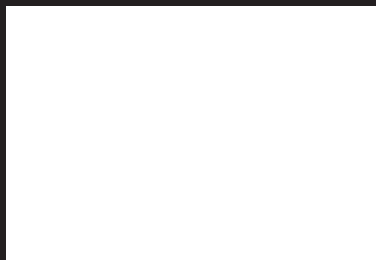


Cut & Paste Trucker



Blue - Collar Blazer

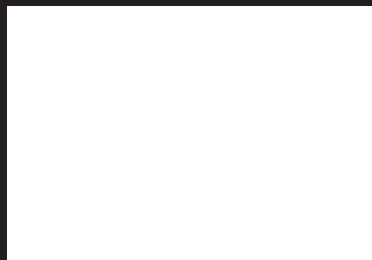
& Fabric



CODE : PWL1234

info - Cotton 98 % ,
Spandex 2 %
Sale point -

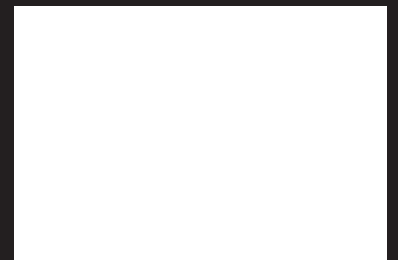
.....



CODE : PWL1234

info - Cotton 98 % ,
Spandex 2 %
Sale point -

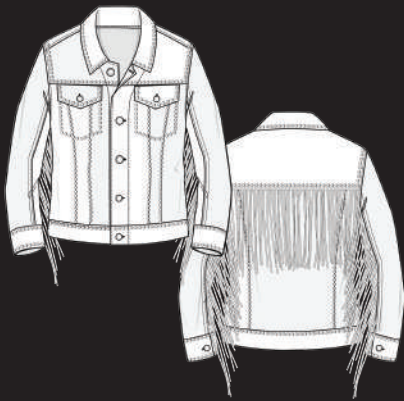
.....



CODE : PWL1234

info - Cotton 98 % ,
Spandex 2 %
Sale point -

.....



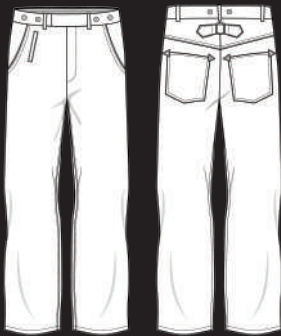
Southwestern Trucker



Relaxed Workwear

WOMAN KEY ITEMS -

Including Retro Shearking, Kimono Housecoat, Railroad Dress, Southwestern Trucker and Relaxed Workwear . A strong Southwestern feel is felt through familiar accents such as Navajo-inspired patterns, beading and 1970s Western embroideries.



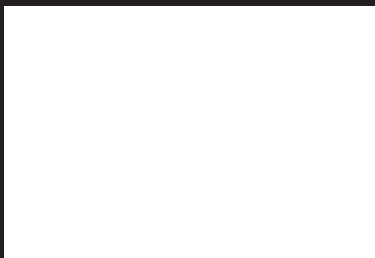
Western Jean



Crust Pant

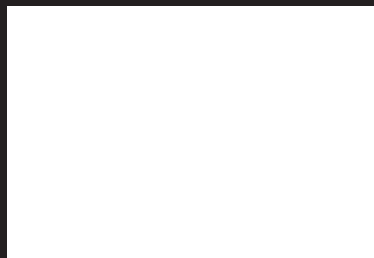
MEN KEY ITEMS -

Including Remixed Rodeo, Cut & Paste Trucker, Blue-Collar Blazer, Western Jean and Crust Pant . A strong American Southwest feel is created with Navajo-style patterns, beading and all-American cowboy details



CODE : PWL1234

info - Cotton 98 % ,
Spandex 2 %
Sale point -



CODE : PWL1234

info - Cotton 98 % ,
Spandex 2 %
Sale point -

FABRIC CHARACTERISTIC

- Made a beautiful hems by evolve the destruction.
- Multiple Shades of indigo
- Multiple Shade from bleaching.
- suitable in patchworks surface and stitch technique

Cozy Ruggedness

Key style - Cozy Ruggedness presents a story that journey through winter's darkest months. It's trend embodies outdoor ruggedness and indoors cosiness. Cozy Ruggedness explore the power of simplicity, focusing on purity of form and function. Performance tech fabrics are relevant for streetwear, bridging the gap between function and fashion.



Overview

- Nature's uncompromising force determines weather-beaten erosion on fabrics through abraded coatings, jacquard weaves and délavé finishes
- Weights shift from the dense and insulating to the technical and sheer in this epic yet soulful theme where the rugged outdoors meets calm indoor serenity

17-1212 TCX

16-1326 TCX

11-0606 TCX

11-4601 TCX

16-0110 TCX

14-4115 TCX

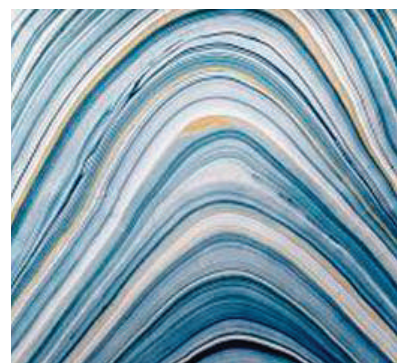
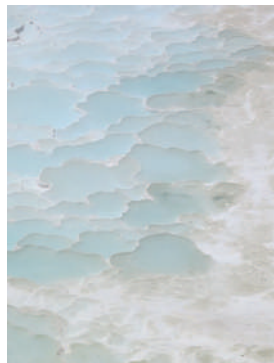
16-4120 TCX

18-0503 TCX

18-5606 TCX

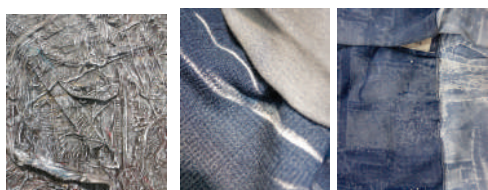
19-0509 TCX





Detail

(A). FROZEN INDIGO - Evolve familiar laundry techniques with new spliced and pieced effects. Tie- and dip-dye effects are modernised with new cut-and-paste effects such as pleating and layered fabric piecing for a kaleidoscopic look. New colour masking and resist dyes evolve traditional patchworks.

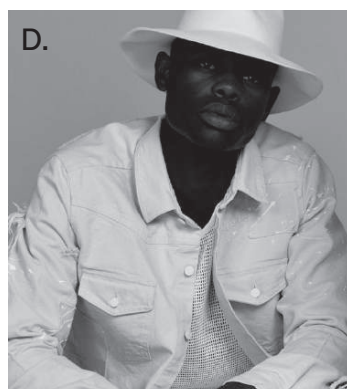


(B). CARBON COATED - Sooty charcoal coatings appear to be dusted over fabric surfaces, leaving carbon pigment impressions on denims.

(C). BLEACHED NEUTRALS - Surfaces are stained and discoloured with earthy accents of ashy brown and yellow markings. The natural character of twill and cross-hatch constructions helps emphasise the rustic appeal.



(D). POWDER COATINGS - Denim surfaces take on a flat white appearance via matte coatings. Treatments are applied all over garments as well as trims to achieve a 2D appearance. Surfaces have a malleable and putty-like hand that is achieved via thick, rubbery resins.



Key Pattern



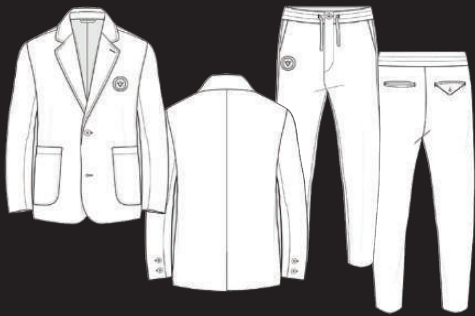
Cocoon Kimono



Practical Jacket



Oversized Shirt Dress



Knit Suit



Coach Jacket



Soft Trucker

& Fabric



CODE : PWL1234

info - Cotton 98 % ,
Spandex 2 %
Sale point -

.....



CODE : PWL1234

info - Cotton 98 % ,
Spandex 2 %
Sale point -

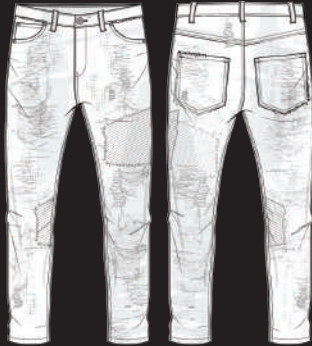
.....



CODE : PWL1234

info - Cotton 98 % ,
Spandex 2 %
Sale point -

.....



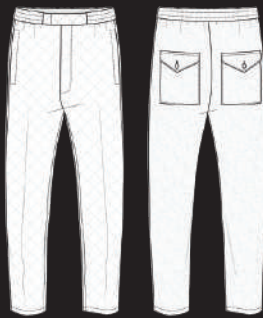
Textured Skinny



Regular Wide



Shearling Jacket



Quilted Pant

WOMAN KEY ITEMS -

Including Cocoon Kimono, Practical Jacket, Over-sized Shirt Dress, Textured Skinny and Regular Wide. Mesh inserts, bungee cords and sporty ribbed trims lend a performance element, while extreme contrast textures mimic the force of winter's unforgiving elements and provide a quietly protective look.

MEN KEY ITEMS -

Including Knit Suit, Coach jacket, Soft Trucker, Shearling Jacket and Quilted Pant . Thermal quilting, bungee cords and taped seams lend a performance element, while visual weaves, lofty furs, needle-punched panels and frays mimic winter's unforgiving elements and add a quietly protective look.



CODE : PWL1234

info - Cotton 98 % ,
Spandex 2 %
Sale point -



CODE : PWL1234

info - Cotton 98 % ,
Spandex 2 %
Sale point -

FABRIC CHARACTERISTIC

-

Sci-fi Streetwear

Key style - Sci-fi streetwear elevated with science fiction opulence, exaggerated in scale and styling. Sci-fi streetwear fuses the past and future to create a world where the imaginable becomes tangible, and fantasy becomes reality.



Overview

- This trend is strong, resilient and defiant
- A survivalist feel is laced with the drama and romance of historical costume
- Luxurious and fierce, Sci-fi streetwear is this season's most opulent, rich and futuristic story, offering great inspiration in the lead-up to Christmas

19-4005 TCX

19-3920 TCX

19-4027 TCX

16-0952 TCX

19-1760 TCX

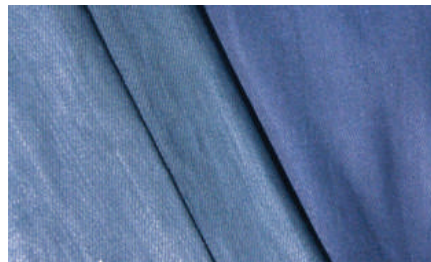
18-1547 TCX

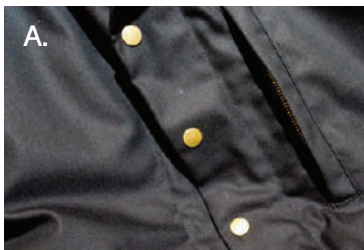
17-4728 TCX

18-0306 TCX

19-5320 TCX

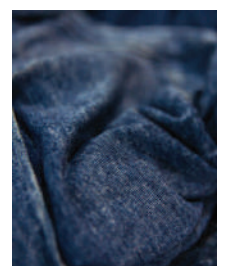
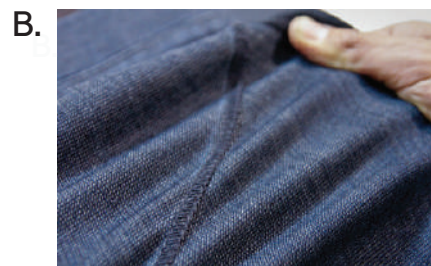
19-0915 TCX





A. Detail

(A). WORKWEAR SHEEN
- With glossy sateen weave. Rich blacks and ark indigos are cleaned up and refines with smooth compact weaves.



(B). STOCKING STRETCH - Super light weight constructions that enhanced soft, stretch and recovery ability.

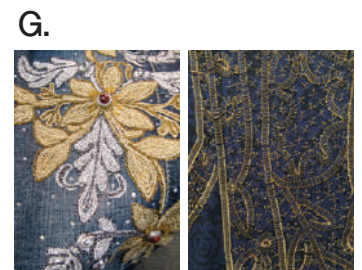
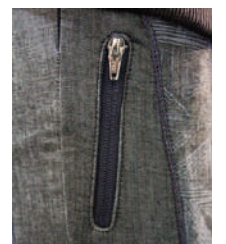
(C). PROTECTIVE DENIMS
- Focusing on enhanced fabric performance such menwear motorcycle brands to look endurance and abrasin resistant denim.



(D). ASIAN ACCENTS
- Asian print ad pattern is reinterprinted in an unexpected way.



(E). BLANK PATCH - Simple black or plain inserts in tonal black substitute in this loud conversational styles.

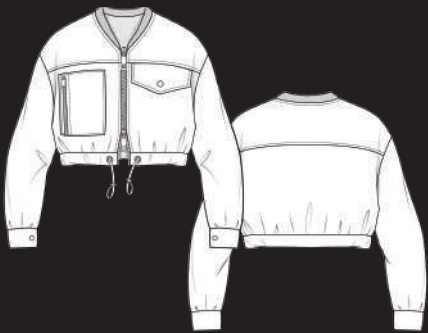


(G). GILDED METALLIC - Gold medieval-like opulence decoration inspired by historical brocades and jacquards. From ornate embroideries to encrusted embellishments, these decorative looks elevate denim with a theatrical attitude.



(F). TRANSITIONAL MATERIALS - Subtle material engineering gives denim surface treatments a technical and futuristic appearance. Resin coatings, Control graphic fusing using taped seams and rubber sealed hems lends a technicle feel to denim.

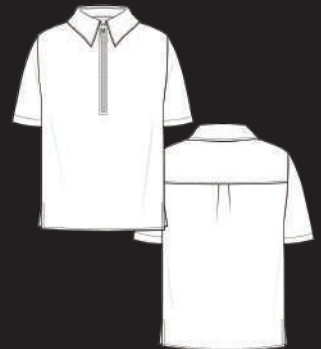
Key Pattern



Utility Bomber



Urban Chore



Contemporary Polo



Utility Shirt



Utility Jacket



Urban Chore

& Fabric



CODE : PWL 1234

info - Cotton 98 % ,
Spandex 2 %
Sale point -

.....



CODE : PWL 1234

info - Cotton 98 % ,
Spandex 2 %
Sale point -

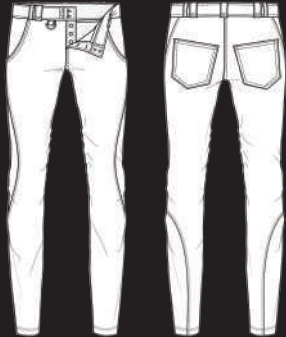
.....



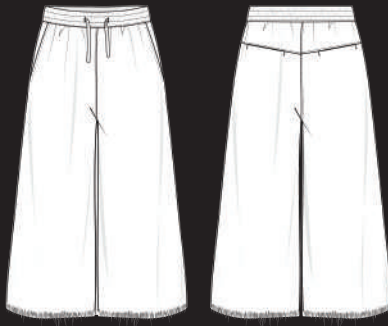
CODE : PWL 1234

info - Cotton 98 % ,
Spandex 2 %
Sale point -

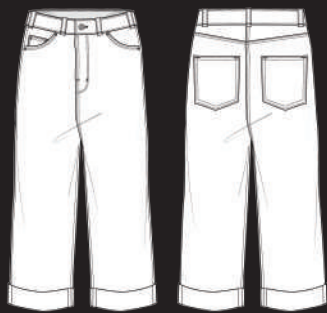
.....



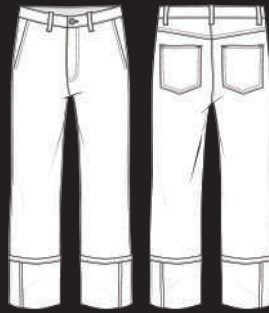
Stocking-Weight Jeggings



Cropped Lounge Pant



Cropped Wide-Leg



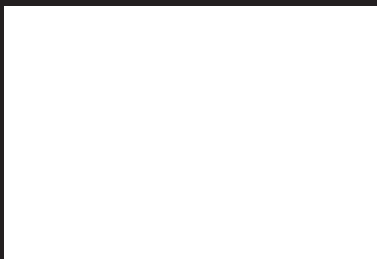
Extreme Turn-Up

WOMAN KEY ITEMS -

Including Utility Bomber, Urban Chore, Contemporary Polo, Stocking-Weight Jeggings, Cropped Lounge Pant. Far Eastern and Eastern European create a new aesthetic cultures and energetic colour clashes.

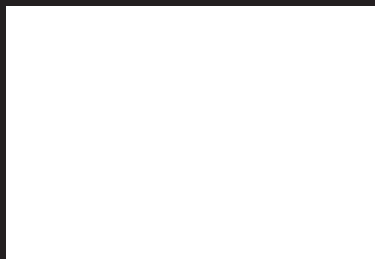
MEN KEY ITEMS -

Including Utility Shirt, Utility Jacket, Urban Chore, Cropped Wide-Leg , Extreme Turn-Up. Use rugged details such as upscaled eyelets, chunky zippers and performance-fabric inserts to add a technical element to items.



CODE : PWL 1234

info - Cotton 98 % ,
Spandex 2 %
Sale point -



CODE : PWL 1234

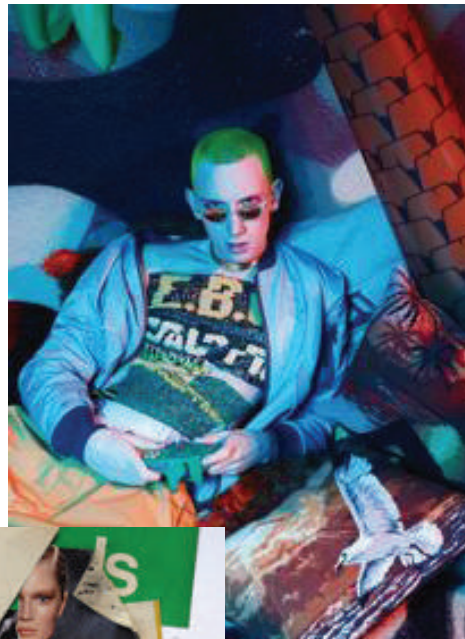
info - Cotton 98 % ,
Spandex 2 %
Sale point -

FABRIC CHARACTERISTIC

-

“No - era” Style

Key style - Fuses the lives from 1970, to the 2000s to create the unpredictable and the odd in an articulate way. Young tastemakers-the internet generation - payhomage to bygone eras, reworking shapes in awkward proportions for an off-killer style.



Overview

- As the worlds of art and fashion draw ever closer, celebrating all things original and high-energy
- “No-era” style challenges convention with a characterful cut-and-paste style, boldly splicing together graphic pattern, odd colour mixes and tactile surfaces
- This transseasonal theme has a spring in its step, as colour is heightened to bring an intense burst of energy to the scene

17-1558 TCX

19-2047 TCX

19-1317 TCX

15-1423 TCX

923 C

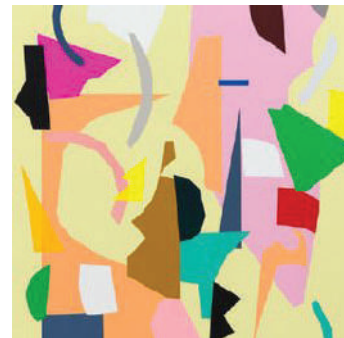
16-0230 TCX

17-1046 TCX

18-4034 TCX

18-4105 TCX

15-4319 TCX



C.



E.



A.

Detail

- (A). MESSY PATCH - Diy patching, crude cutouts with frayed and raw edges are layered to create statement collages. (B). FRANKEN-STEIN PIE CING - The indigo colour block trend evolves with crude mismatching patchworks.



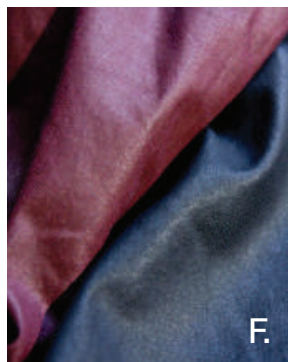
(C). ALL-OVER ORDINARY - Explore more classic vintage casts by style in gaining traction within denim. (D). MATTE RETRO BLUES - Bright-cast blues denim. (E). RETRO RAW - with unwash denim. colourways.



D.

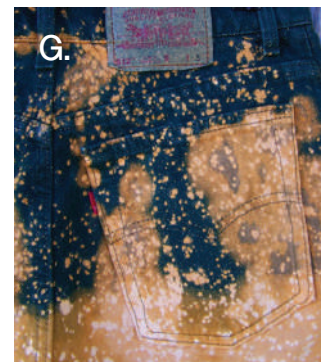


B.



F.

(F). VINYL COATING - Resin coatings with a highly tactile touch with glossy and wet look treatments in bold (G). RETRO MARBLE - 1980s Acid-wash and bleach splash treatments with an injection of statement colour.



G.



H.

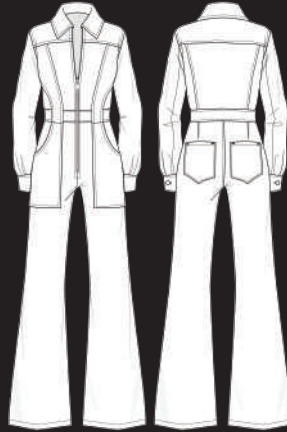


(H). SCRIBBLE & SCRAWL - A Playful hand drawings and scribbled text are applied with pen and paint. (I). NASTY DESTRUCTION - Crude tears and shredded panels, contrast wefts overly worked stitch repairs and frayed edges are provided in this look.

Key Pattern



Quirky Trucker



Retro Jumpsuit



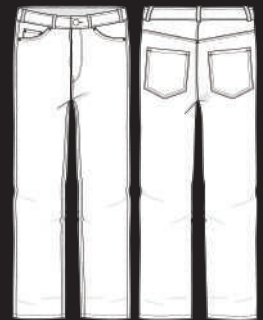
A-Line Skirt



Stadium Jacket



1970s Shearling



1990s Slouch

& Fabric



CODE : PWL 1234

info - Cotton 98 % ,
Spandex 2 %
Sale point -

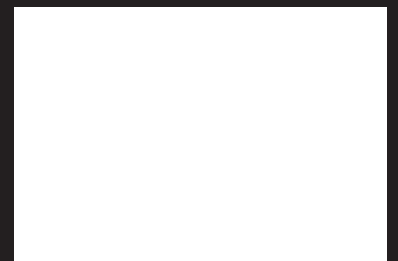
.....



CODE : PWL 1234

info - Cotton 98 % ,
Spandex 2 %
Sale point -

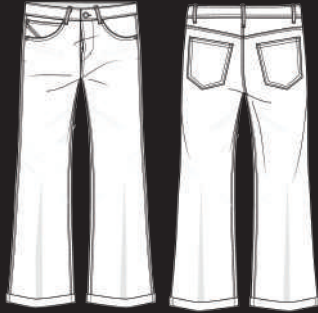
.....



CODE : PWL 1234

info - Cotton 98 % ,
Spandex 2 %
Sale point -

.....



Cropped Flare



Tulip Flare



Western Jean



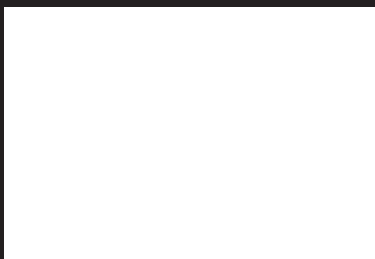
High-Waist Slim

WOMAN KEY ITEMS -

Including Quirky Trucker, Retro Jumpsuit, A-Line Skirt. Cropped Flare, Tulip Flare. With a characterful cut-and-paste style, boldly splicing graphic prints, odd colours and tactile surfaces.

MEN KEY ITEMS -

Including Stadium Jacket, 1970s Shearling, 1990s Slouch, Western Jean, High-Waist Slim. Explores bold takes on vintage classics , all-American bright-cast blues, dead-stock 1970s raws and tobacco suedes channel the true vintage spirit of the era, with crisp matte finishes emphasizing the retro appeal.



CODE : PWL1234

info - Cotton 98 % ,
Spandex 2 %
Sale point -



CODE : PWL1234

info - Cotton 98 % ,
Spandex 2 %
Sale point -

**FABRIC
CHARACTERISTIC**

-